



## nuxbio IV

biometric identification  
terminal



for attendance and  
access control

# Attendance and Access Control Terminal by Biometric Identification

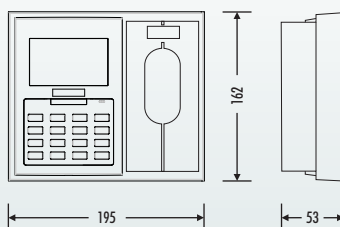


## nuxbio IV

### Characteristics

- Biometric fingerprint sensor.
- Long range RFID reader.
- Manage the attendance of a large number of people.
- It combines several types of authentication (finger, password and card).
- It can be used for attendance control and access control.
- Siren activation with programmable tones.
- Easy-to-use remote control of terminals.
- Reduce administrative costs.
- Weather resistant.

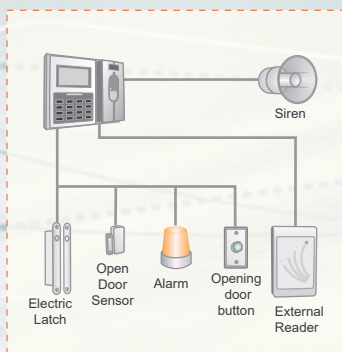
### Dimensions



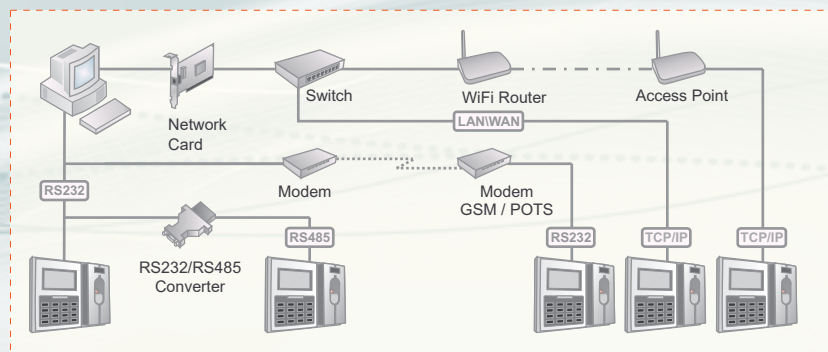
### Technical Specifications

Certification	CE marking
ID reader	Optical, scratch and impact resistant
Card reader	RFID readable at 14 ~ 20 cm
Screen	160x80 pixels with backlight (Blue Backlight LCD)
Keyboard	16 keys, backlit (Blue Backlight LED)
Communication	RS232, RS485, TCP/IP or GSM
Operation	Completely standalone or PC controlled
Authentication	Finger, Card+Finger, PIN+Finger, Card
Number of Users	950 or 4750 with 2 fingers each
Verification	< 1 second
Capacity	Store up to 20,000 events
Profiles Access	8 access profiles with 3 schedules each
Siren	1 relay with programmable touches
Door opening	1 relay with configurable activation time
Alarm	1 relay, activated in case of forced opening
Dimensions	19.5(W) x 16.2(H) x 5.3(T) cm
Pwer Supply	DC 12V 1A
Temperature	0° ~ 50° C
Humidity	20% ~ 90%

### Standalone Configuration



### Network Configuration





Rua José de Moura Coutinho, 608 1º Andar  
4745-330 Trofa, Portugal  
T.: +351 229 812 220 F.: +351 229 867 265  
E.: [innux@innux.com](mailto:innux@innux.com) W.: [www.innux.com](http://www.innux.com)

This document is provided for informational purposes only. The information contained herein, which Innux believes to be accurate at the time of its publication, is subject to change without notice, given the constant evolution of the product. Innux is not responsible for any possible error or omission in this document, nor will it be subject to any obligation based on the information it contains, as a result of its publication and availability.

All photographs and images contained in this document are subject to copyright and may not be copied or reproduced.

Innux is a registered trademark of Innux Technologies, Lda.

All other brands mentioned are the property of their respective owners.

© Copyright Innux Technologies, Lda