



# NuxIO II

Controller board with ethernet, inputs and outputs  
opto-isolated.



ETHERNET  
INTERFACE



RS-232  
INTERFACE



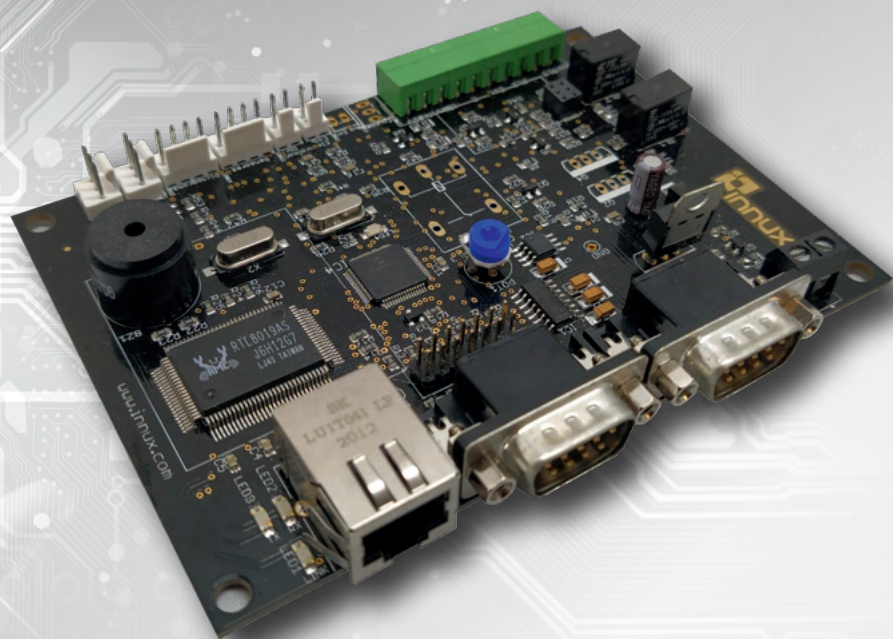
LCD  
INTERFACE



WARNING  
SOUND



TCP / IP

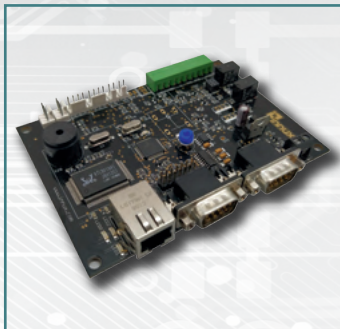


Access



Attendance



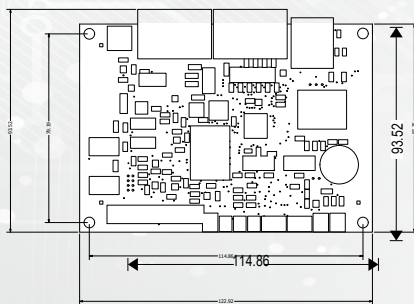


# NuxiO II

## Characteristics

- NuxIO II is a remote control board with ethernet connection.
- It can be used for data collection via Intranet or Ethernet.
- It can also be used to control remote equipment.
- It has two RS232 interfaces, one Ethernet interface and 1 LCD interface 2 x 8 Characters.
- Allows connectivity with equipment such as barcode readers, RFID readers, LCD displays.
- The NuxIO II Board has 2 configurable relay outputs (NA -NC), which allow use for control equipment such as electric latches and turnstiles, it also has 2 dry contact inputs
- and 1 audible warning (buzzer).

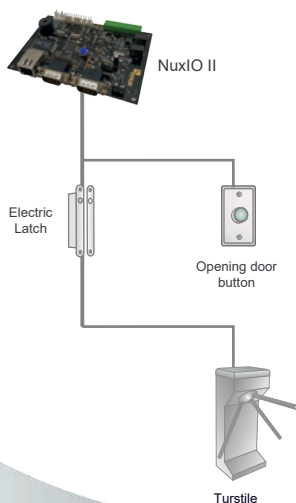
## Dimensions



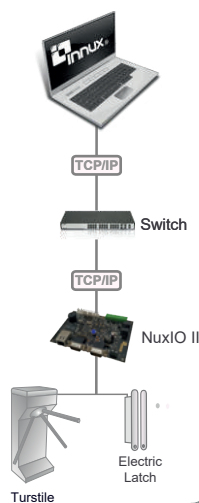
## Technical Specifications

Communication	Ethernet, Intranet
Data input	2 RS 232 interfaces; 1 Ethernet interface and 1 LCD interface 2 x 8 Characters
Inputs / Outputs	2 inputs per dry contact and has 2 configurable NO - NC relay outputs
Protocols	MAC; TCP; IP; PRA; ICMP; UDP; HTTP
Operation	On-line , conncted to a PC
Power Supply	12 V DC
Consumption	200 mA
Temperature	0 ~ 50 ° C
Dimensions	114.86 mm X 122.92 mm X 93.52 mm X 87.35 mm X 79.19 mm X 23.60 mm (T.)
Humidity	20 % ~ 90 %

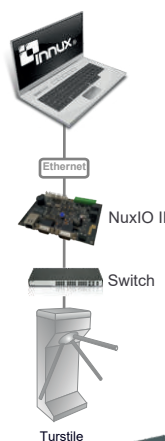
## Examples of Use



### TCP/IP



### Ethernet



### Intranet

